

# Love to watch?

Design a purpose-made viewing space for telly time!

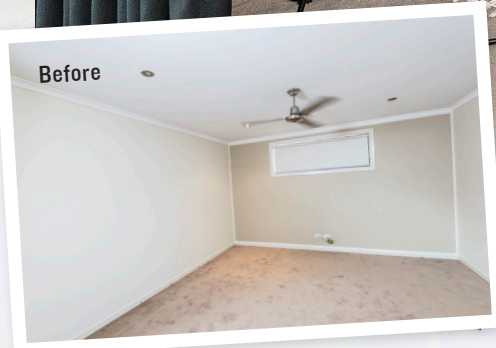
**d**o you relish your hours in front of the screen but don't have the best spot to enjoy what's on? Shift your focus to an under-utilised area in your home, such as a nook like this, then turn it into the home cinema of your dreams. Just add a floating entertainment unit, wall-mount your telly and ensure you can control the natural light with window furnishings and a room-dividing curtain. Layer in a few decorative touches, make yourself snug, then go on – hit play!

SEEN ON BHG TV  
FRIDAYS 7.00



1

Before



2



4

All eyes on the action! Arrange the sofa so it's in prime position for viewing a flick. Bring in a coffee table, easy chair and reading lamp for relaxed living-room style. ➤

Gotta have this wallpaper?  
Shop online, at [luxewalls.com.au](http://luxewalls.com.au)

**1 Although this space** needs to be ultra cosy when you're zoning out in front of the television, you also want it to present well at other times. Add colourful throws and cushions to your sofa, a patterned rug, and bring on the wow factor with an easy-to-DIY feature wall. See next page for instructions.

**2 Invite a cool, decorator side** to your cinema space with a leaning-ladder shelf. You can use it to display an arrangement of items you love – or even your comfy throws, ready for sofa time.

**3 In addition to having blinds** on the windows, create the ability to further control the impact of natural light in an alcove with a ceiling-to-floor curtain in a deep charcoal fabric.



3



FOR SHOPPING DETAILS,  
SEE STOCKISTS PAGE



# get the look



Nomi Storage Ladder in Black, \$299, Country Road.



Flinders Coffee Table in Natural/White, 360 x 900mm-dia., \$750, Design Twins.

Mood #2 Art Print, 50 x 70cm, \$190, Blacklist; Ribba Frame in Black, 50 x 70cm, \$29.99, IKEA.



Cult Linen Cushion in Cove, \$82.95, MRD Home.



Bombay Velvet Cushion in Teal, \$59.99, Adairs.



Parker Round Bucket Chair, 71 x 67 x 78cm, in Black, \$345, Papaya.



Nightfall Forest Framed Photograph, 85 x 115cm, \$395, Nest Emporium.



Bulb Vase in Black Frost, \$34, Zakkia.

Bright Teardrop Ceramicist Vase, \$24, West Elm.



## HOW TO CREATE YOUR FEATURE WALL

Shop for a graphic wallpaper with self-adhesive backing in a graphic design to make creating a feature wall easy-as!

### Gather your supplies

Luxe Walls Canvas self-adhesive wallpaper in Brush Stroke Splat; thick felt pad; utility knife (sharp)

### FOR YOU TO NOTE

Read and understand the complete product installation guide before proceeding.

#### Here's how

**STEP 1** Ensure wall is dust-free and smooth, with little to no surface variation.

**STEP 2** Using panel 1, line wallpaper up with left edge of wall and ceiling. Make sure your wallpaper is level along the top. As not all walls and doorways are perfectly square, you may need to overhang this panel and trim the excess later.

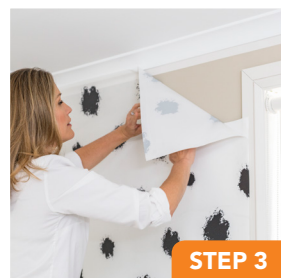
**STEP 3** Peel 10cm of backing paper from the back of your wallpaper and stick it to the top of the wall. Once happy with the position, gently smooth the wallpaper in place.

**STEP 4** Use your hand or felt pad to smooth panel in place and to push out any bubbles

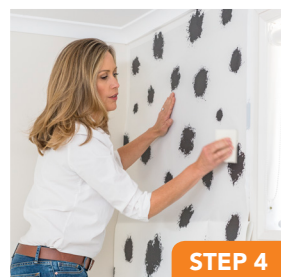
## STEPS



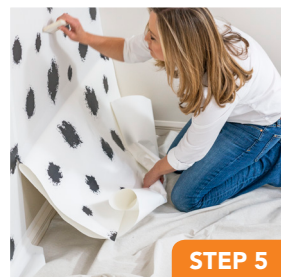
STEP 2



STEP 3



STEP 4



STEP 5

and wrinkles. Smooth from vertical centre out to sides. Big bubbles may require you to lift wallpaper slightly and reapply. Repeat this step until you reach the skirting at the bottom of the wall.

**STEP 5** Hang panel 2 next to panel 1, ensuring it is level at the top and the patterns of both panels line up. Repeat Steps 3 and 4 to hang remaining panels.

**STEP 6** Trim excess wallpaper at the top, bottom and right-hand side of wall, where applicable. ■